

# ***THE TRANSIT ADVOCATE***

**Newsletter of the Southern California Transit Advocates**  
**Jan-Feb-Mar 2018** **Vol. 26, No. 1**



## **Inside This Issue:**

- Transit Updates (pg. 2)
- From The President (pg. 3)
- 28 for '28 (pg. 6)
- Uber uber Alles (p. 8)
- In Memoriam (pg. 9)
- Photos of the month (pg. 10)

*Riverside Transit Agency .Line 200 at  
San Bernardino Transit Center.  
Kevin Bleich photo*

ISSN 1525-2892

## ***Transit Updates***

### **METRO**

On the Metro Green Line, service between Hawthorne/Lennox and Redondo Beach stations will be operated by shuttle buses until April 7. This is to allow for the Metro Crenshaw Line to be connected to the Green Line near Aviation station.

Changes to Metro Bus service, eff. December 10, 2017

Line #2 will now only run between Downtown LA and Westwood. New Line #602 will connect PCH, Pacific Palisades, Brentwood, and Westwood, terminating at Wilshire and Veteran.

During peak hours, Lines #2 and #92 will combine during peak hours, providing a one-seat ride from Sylmar Metrolink to Downtown LA.

Line #177 will be a peak hour shuttle between JPL and the Memorial Park Gold Line station in downtown Pasadena. Service to Pasadena City College will be discontinued: use Metro #180, #181, #780 or Foothill Transit #187.

Line #230 and #234 will terminate at a new facility at Mission College; service on the Hubbard-Simshaw-Sayre loop will be deleted.

The route of #534 in Santa Monica will be moved to 5th/Colorado for better connections with the Metro Expo Line.

Late night and owl service changes (also eff. Dec 10) include:

The 2:12, 3:12, and 4:12 am trips on #28 to Eagle Rock, as well as the 1:41, 2:41, and 3:41 trips to

Downtown LA have been cancelled due to low ridership. Line #83 provides late night service to Eagle Rock.

The Adams-Jefferson owl loop on #37/#38 has been replaced with bidirectional service on Adams Bl.

#45 owl will run between LA and Rosecrans Ave, only. #246 will provide owl service along Avalon and Pacific, linking San Pedro with Harbor Gateway Transit Center and connecting with the Silver Line owl service.

#233 on Van Nuys Bl will get new owl service. #234 will get an additional trip leaving Expo Sepulveda Station at 1:04 am.

#656 owl will serve Universal City Transit Center, north on Lankershim to Sherman Way,

### **METROLINK**

Effective December 16, Metrolink trains that serve San Bernardino now begin and end at the San Bernardino Transit Center (San Bernardino-Downtown) along with the San Bernardino train depot. This includes all San Bernardino Line trains and selected IE/OC trains. The transit center also serves Omnitrans, the new RTA 200, Mountain Transit, Pass Transit and the sbX BRT system.

Due to trackwork in South Orange County and San Diego County, selected weekend Metrolink Orange County and IE/OC Line trains will travel as far south as Laguna Niguel, with buses serving stations south to Oceanside. The dates are March 3-4, 10-11, and April 21-22. Amtrak and Coaster trains are also affected. (cont'd on pg 4)

## ***From The President***

Hello all transit advocates and other transportation users and employees who receive the Transit Advocate newsletter!

Our 2018 board of directors is President Mark Strickert, Vice President Perias Pillay, Secretary HughJohn Malanaphy, and Treasurer Dana Gabbard. The board met recently in Los Angeles, to get to know each other better and to share some ideas for group newsletters, meetings, events, study tours, and dues for 2018. Former SOCATA President Nate Zablen stopped by to pass the baton, in the form of our gavel.

Since you are reading this, the SOCATA "Transit Advocate" newsletter is obviously back. This is the most important function of SOCATA, and the newsletter's founder Charles Hobbs has returned to edit and publish. Please be sure to send him any news and photos related to local or regional transit in Southern California. When you attend transit agency public meetings and events, please let us know where and when, and if there are any important details to share.

Transit news and events can also be shared on our website, or on our Facebook page.

Our goal is to have at least four meetings this year. We got away from regular meetings when they were used for little more than monthly socializing and schedule-swapping. Meetings should only be held when SOCATA business needs to be discussed, and when useful guest speakers are available. For now, the next meeting is proposed for April 7th. Secretary HughJohn Malanaphy is working on a list of potential guest speakers.

We would like to again have booths or tables at events. We just need to come up with appropriate, affordable events. Our most regular fair, the Fullerton Railroad Days, will not be held in 2018 though they hope to return in 2019. Where to go, and more importantly who will volunteer to staff?

There was a strong desire for a return of study tours, of transit facilities and/or sets of transit routes. Day After Thanksgiving was missed last year. Suggestions, preferably with facility contact information or a planned out trip itinerary, are welcome here at busnrail @ yahoo.com. 🚌

## ***Transit Updates Continued***

(cont'd from Pg 2)

### **SANTA MONICA (BIG BLUE BUS)**

Service changes, eff. Feb 18:

All Route #2 buses begin and end at Main St. and the Civic Auditorium.

On the #7 Rapid, the current detour near Wilshire and Western (due to Metro Purple Line construction) is now permanent.

Route #17 rerouted near the VA Medical Center via Sawtelle, rather than Santa Monica Bl and Federal Ave

Minor route and schedule changes on #41 and #42 serving Santa Monica College, 17th St Station and Montana Ave.

### **CULVER CITYBUS**

Again due to Metro Purple Line construction, Route #3 in Century City will be detoured off Constellation Blvd and onto Century Park West (northbound) or Century Park East (southbound)

### **BEACH CITIES TRANSIT**

Due to Green Line/Crenshaw Line construction, BCT #109 has been rerouted from Aviation/Century to Airport/96th St until further notice.

### **TORRANCE TRANSIT**

New Line #4X (eff. September 27, 2017) replaces Line #4, and provides bidirectional peak-hour service between Torrance and Downtown LA, via the Harbor Freeway Express Lanes. On Saturday, service is provided all day, hourly. Fare is \$2.00.

### **FOOTHILL TRANSIT (eff. Oct 22, 2017)**

Route #187 has been split at Downtown Azusa Gold Line Station. The portion west of Azusa will remain #187; it has also been rerouted via Huntington Dr and Rosemead Bl, leaving a portion of Colorado Bl. unserved. East of Azusa to Montclair will be served by new #188.

Selected weekday AM trips on #291 will be rerouted via Towne, Baseline and Fruit St in La Verne.

Route #292 will run all day (weekdays) and absorb portions of (cancelled) #855.

Route #480 will serve Mt. San Antonio College in Walnut, following the route of #194 between Cal Poly Pomona and Eastland Center (the portion along I-10, including service to Val Verde, will no longer be served)

#481 will be cancelled; passengers can transfer to the Metro Red Line for service on Wilshire.

#494 will also be cancelled

#690 will connect with the Metro Gold Line at Citrus College/Azusa Pacific Station (instead of downtown Azusa). Buses will stop at the northeast corner of Foothill and Citrus.

### **ANTELOPE VALLEY TRANSIT AUTHORITY (8/14)**

The North County Transporter (Santa Clarita-Antelope Valley) will add stops at College of the Canyons and Henry Mayo Hospital eff. August 14, 2017.

## ***Transit Updates Continued***

### **OCTA (OC BUS) eff. February 2018**

Weekday peak frequency will be improved on #56, 89, 90, and 91; weekday evening frequencies on #29, 50, 53 and 60; weekend frequencies on #29, 43, 50, 53, 54, 60 and 91. #46 will run later on weekends.

Route #59 will be extended to the District at Tustin Legacy .

#30,46,50,86,90,153 and 178 will have low-use trips deleted.

Express routes #212 and #216 will be cancelled, as well as Stationlink #464 and Express #794A.

### **RIVERSIDE TRANSIT AGENCY**

Rapidlink Gold (a peak hour, limited stop service between Riverside/UCR and Corona) began August 28

Other Riverside Transit Agency changes eff. Jan 14

Route #3 extended north to serve the Costco and Amazon warehouse in Eastvale

Route #21 and 49 - extended north to the Southridge Village Shopping Center, for connections with Omnitrans #82

New Route #200 provides express service seven days a week between San Bernardino, Riverside, Orange (Village at Orange) and Disneyland.. #200 replaces #216, but does not stop at Corona.

New Route #205 connects Temecula, Lake Elsinore, and Corona with the Village at Orange.

### **VENTURA COUNTY**

VCTC Transit routes now have numbers:

- Hwy 101 numbered #50-53
- Conejo Connection (to Warner Center) numbered #54-59
- Hwy 126 trips numbered #60-69
- East County routes numbered #70-79
- Coastal Express (Ventura-Santa Barbara) numbered #80-84, while trips serving Goleta are numbered #85-89.
- The Oxnard-Camarillo Connector and Cal State Channel Islands shuttles are numbered #90-99

Service reduced on Route #50 series. Last thru trip from Ventura to Thousand Oaks leaves Ventura at 5:45 pm (the next two trips end in Camarillo)

Midday and Saturday Line #70 service to Westlake eliminated as it duplicates Metro #161 and TOT #4

Midday service on #80 (Ventura-Santa Barbara) between 9am and 1pm eliminated. Weekend service will run five round trips (down from 9).

On weekends and campus breaks, the CSUCI shuttles will be merged with the Oxnard-Camarillo Connector as #96.

Route #77, the East West Connector (#77) started on November 10. This route connects Simi Valley, Moorpark, Camarillo, Oxnard and Ventura on weekdays only. 🚌

## 28 By '28

On September 13, 2017, the International Olympic Commission awarded the 2028 Summer Olympic Games to Los Angeles.

The City of Los Angeles, which had already hosted the Games twice (1932 and 1984), will become one of only three cities scheduled to host the Olympics three times (the other two are London, in 1908, 1948, and 2012; and Paris, in 1900, 1924, and 2024)

In 1932, spectators could use Pacific Electric and Los Angeles Transit Lines streetcars. A special fleet of buses did the job for a rail-less Los Angeles in 1984. But in 2028, not only will the existing Metro Rail network undergo substantial expansion, but Metro also hopes to accelerate the construction of additional rail, bus, roadway, and bicycle projects in preparation for the Games.

The existing projects under construction are:

Crenshaw/LAX light rail line, connecting Crenshaw/Expo with the Green Line at Avalon Station, will open by 2019. An additional station will be built near LAX for a connection to a people mover serving the airport terminals; this should open around 2023

The Regional Connector, a second subway in Downtown Los Angeles, linking the Blue, Gold and Expo Lines, will allow one-seat rides between Azusa and Long Beach, and between East Los Angeles and Santa Monica.

The first phase of the Purple Line extension, along Wilshire between Western and La Cienega BIs, is also scheduled to open in 2023.

Projects scheduled to be complete by 2028 include:

A Bus Rapid Transit (BRT) connecting North Hollywood (Red/Orange Line station) and Pasadena will open in 2022

Another BRT project, to open in 2023, will operate east-west along Northridge Bl in the San Fernando Valley, serving Cal State Northridge along the way.

The Gold Line will be extended east to Claremont (and perhaps Montclair if San Bernardino County provides funding) by 2025

The Los Angeles River bike path will be extended through Downtown LA and into the San Fernando Valley sometime in 2025  
The HOV lanes on I-405 through the Sepulveda Pass will be converted into toll "ExpressLanes" (similar to those now on I-10 and I-110) by 2026

The East San Fernando Valley Transit Corridor project, which will be either a BRT or an LRT along Van Nuys Boulevard, is to open by 2027.

Orange Line improvements, including grade separations at Van Nuys and at Sepulveda, as well as gated crossings, would be provided by 2025.

The Purple Line would reach Century City in 2025, and Westwood by 2026. (This project was originally scheduled to be completed by 2035).

Vermont Bl. Bus Rapid Transit (BRT). Limited-stop buses will operate in their own dedicated lanes between Gardena and Los

Feliz, bringing much-needed service to LA's second busiest bus corridor (only Wilshire Bl. is busier). Scheduled to open in 2028.

Additional projects, requiring as yet under-termined funding, include:

South Bay LRT extension from Redondo Beach to Torrance

Blue/Expo Line improvements, perhaps a grade separation near Washington/Flower

Sepulveda Transit Corridor, between Van Nuys and Westwood.

West Santa Ana Branch LRT, from Union Station to Cerritos

Gold Line Extension to either South El Monte or Whittier

ExpressLanes on I-105

ExpressLanes on I-10 extended to the San Bernardino County Line

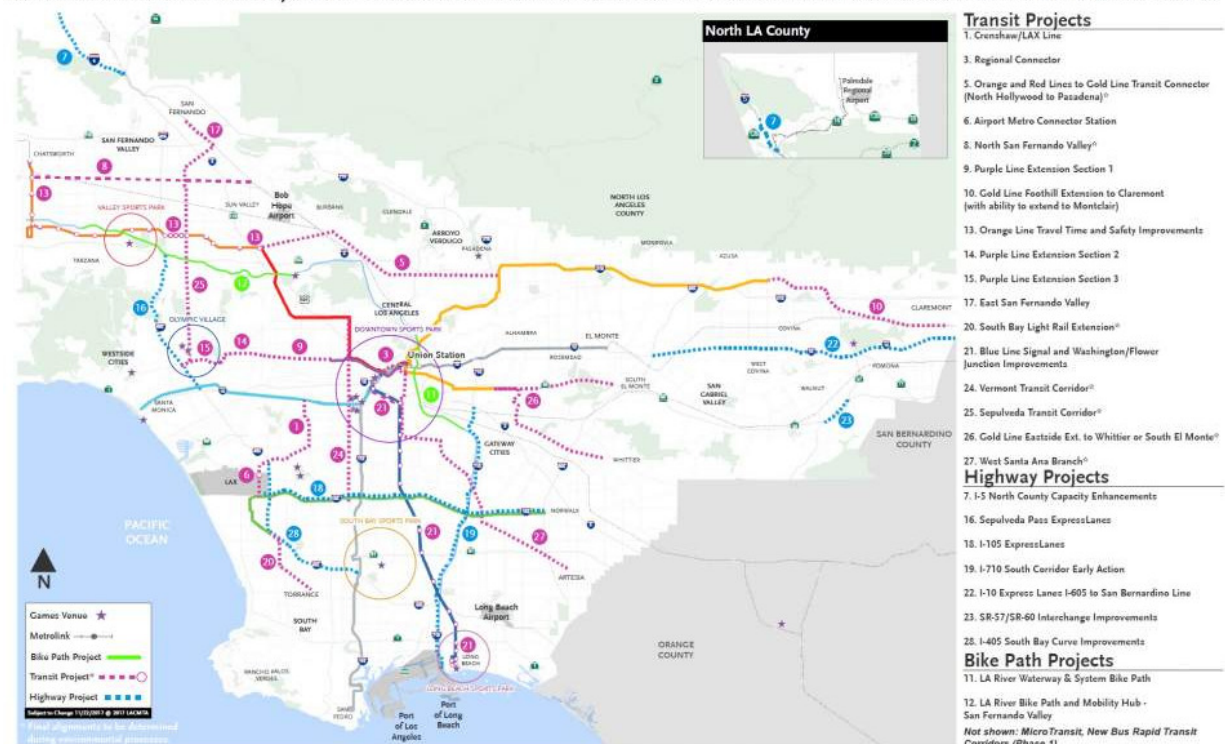
I-405 South Bay Curve improvements

SR-57/60 interchange improvements in Diamond Bar

I-710 improvements, including elevated truck lanes

"Microtransit" - a publicly funded version of Uber or Lyft. 🚗

# DRAFT TWENTY- EIGHT BY '28 PROJECT LIST— TRANSPORTATION INVESTMENT GUIDE IN TANDEM WITH THE 2028 OLYMPICS AND PARALYMPIC GAMES





## ***Uber uber alles*** by Charles P. Hobbs

On page 45 of the book, *Hidden History of Transportation in Los Angeles*, a scenario depicts a prospective passenger using a smartphone to request a ride on a van running on a fixed route.

This futuristic scenario is coming to pass as Uber rolls out its “Express Pool” service in February.

Although the current Uber Pool service allows passengers to travel at a reduced fare by sharing a ride, Uber Pool trips sometimes take passengers out of their way in order to pick up and drop off other users.

Instead, Express Pool vehicles will operate on a more direct route. The tradeoff is that passengers may have to walk a block or so, as if walking to a bus stop, in order to board an Uber vehicle. Unlike a fixed-route bus, though, Uber Express Pool routes are created automatically according to passenger demand.

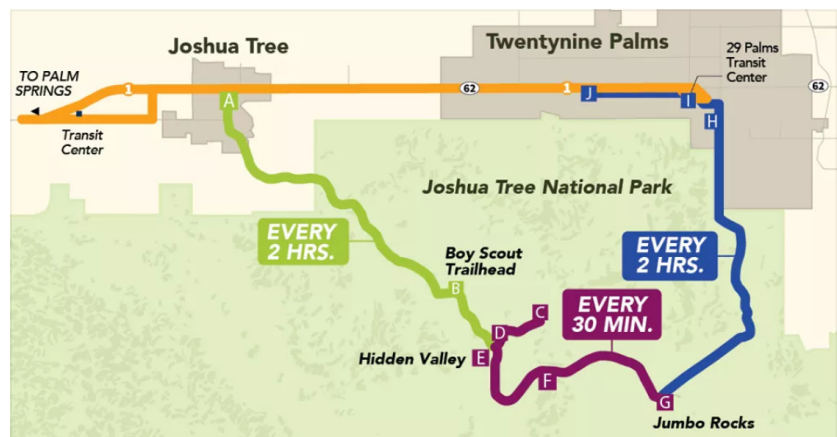
Already operating in San Francisco and Boston,

Uber Pool Express started operating on Feb. 21 in Los Angeles, San Diego, and Denver, and on Feb. 22 in Philadelphia, Washington, and Miami.

Uber also has plans to integrate with existing public transit systems and bike sharing, according to Uber CEO Dara Khosrowshahi. “I want to run the bus systems for a city,” Khosrowshahi said. “I want you to be able to take an Uber and get into the subway — if the trains are running on time, you’ve got real-time data — get in the subway, get out and have an Uber waiting for you for right now. Or know that there’s a bike right there for you that gets you where you’re going in the fastest manner.”

While there will be debate as to whether Uber and similar companies can replace public transit, they are not going away anytime soon. Perhaps it is time to see how they can complement, rather than compete with, public transit. 🚌

*The long-planned Joshua Tree National Park RoadRunner shuttle service began operations on February 1st. Buses run daily until April 30th, every two hours from the park visitor center at Park Blvd. and Hwy 62 in Town of Joshua Tree, and from the Twentynine Palms Hwy 62 Stater Bros. and transit center. For now, designated parking is only available for the Twentynine Palms route, at the Stater Bros. There is also an internal shuttle in Joshua Tree National Park operating every 30 minutes. (Via Mark Strickert)*

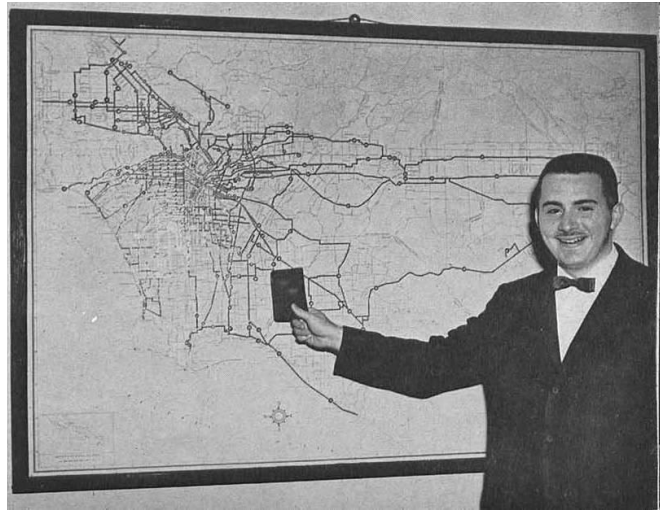




## ***In Memoriam***

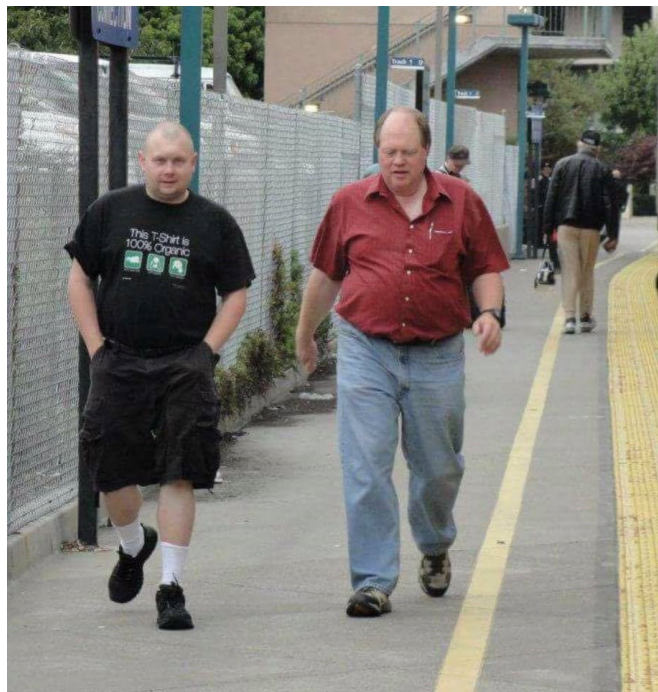
Transit advocate Edmund A. Buckley passed away on July 25, 2017.

While growing up in Chicago, he became familiar with the lines of the Chicago Transit Authority. After moving to Los Angeles, he rode every local LAMTA bus line over a period of four years. He worked for Continental Trailways and the Orange County Transit District, founded the Western Transit Society, and was the archivist for the Southern California Transit Advocates. 🚗



We are also saddened to learn of the passing of rail and transit enthusiasts Zack Wilhoite and Jim Hamre. Both were killed in the derailment of Amtrak 501 near Tacoma, WA, on December 18, 2017.

Zack worked for Pierce Transit, while Jim worked for the Washington State Department of Transportation. Both were members of rail advocacy groups such as All Aboard Washington and the Rail Passenger Association. They also participated in rail and transit enthusiast activities throughout the U.S. and around the world. 🚗



## ***Photos Of The Month***

*New Flyer XN40 on  
Metro #501, Express  
between Pasadena  
and North Hollywood.*

*C. P. Hobbs photo*

**Got Photos?  
Email them to  
[cph1776@yahoo.com](mailto:cph1776@yahoo.com)**



*Long Beach Transit New Flyer Artic. C. P. Hobbs photo*



## ***Photos of the Month***



*Above: OCTA buses at Irvine Center and Jeffery, City of Irvine.  
Below: Omnitrans, Sierra Av, City of Fontana (Both: C. P. Hobbs)*



**Yearly Dues for SO.CA.TA:**

Individual Members: \$30.00 (Print or PDF)

Low Income: \$18.00 (Print Newsletter)

Low Income: \$12.00 (PDF Newsletter)

Dues are prorated on a quarterly basis.

**Submission of materials:** We prefer email to cph1776@yahoo.com. Print materials can be sent to 3010 Wilshire #362, Los Angeles, CA 90010.

Please enclose a self addressed stamped envelope for returns. Submission are used at the discretion of the editor and may be edited for space constraints.

**Opinions:** Unless clearly marked as "Editorial" or "Position Paper", all written material within, including all inserted flyers and postcards, are the expressed opinions of the authors and not necessarily that of the SO.CA.TA.

**Copyright:** © 2018 Southern California Transit Advocates. Permission is freely granted to reproduce/reprint ORIGINAL articles from the Transit Advocate, provided credit is given to both the

author and the Southern California Transit Advocates. In all other cases, permission must be secured from the copyright holder.

**Disclaimer:** The Southern California Transit Advocates is not affiliated with any governmental agency or transportation provider. Names and logos of agencies appear for information and reference purposes only.

**SO.CA.TA officers, 2018**

President:	Mark Strickert
Vice President:	Perias Pillay
Secretary:	Hugh John Malanphy
Treasurer:	Dana Gabbard
~~~~~	
Newsletter Editor:	Charles Hobbs
Newsletter Prod. Mgr:	Dana Gabbard
Webmaster:	Charles Hobbs
Archivist:	(vacant)

Next SO.CA.TA Gatherings:

**April 7:** Meeting (Angelus Plaza, 255 S. Hill, L.A.)



**Southern California Transit Advocates**  
**3010 Wilshire #362**  
**Los Angeles, CA 90010**  
<http://www.socata.net>

49¢  
First  
Class  
Postage



## SOUTHERN CALIFORNIA TRANSIT ADVOCATES

3010 Wilshire #362, Los Angeles, CA 90010

☎ 213-388-2364    <http://www.socata.net>

Jan. 21, 2018

Dear fellow transit advocate:

It's time once again for the Southern California Transit Advocates' annual membership renewal. Please make checks payable to "Southern California Transit Advocates," and mail renewals to treasurer Dana Gabbard at the address above. If you have already renewed for 2018, we thank you!

The SOCATA board of directors has agreed to extend paid 2017 memberships to the end of 2018 for members who request this.

Mark Strickert  
President,  
Southern California Transit Advocates

-----  
Check with your tax advisor whether organization dues and donations are tax deductible; we are a 501(c)(4) organization.    ☐

Regular member — \$30 \_\_\_\_\_ hardcopy newsletter \_\_\_\_\_ or, PDF \_\_\_\_\_  
Limited income — \$18 hardcopy newsletter \_\_\_\_\_  
or, \$12 PDF newsletter via e-mail \_\_\_\_\_

Additional donation — \_\_\_\_\_  
(If sponsoring memberships for other transit activists, please write their names and e-mail or mailing addresses on the reverse)

☐ Paid member in 2017 who wishes to have their membership extended to 2018

Name \_\_\_\_\_

Address \_\_\_\_\_

City \_\_\_\_\_

State \_\_\_\_\_ Zip Code \_\_\_\_\_

e-mail address \_\_\_\_\_